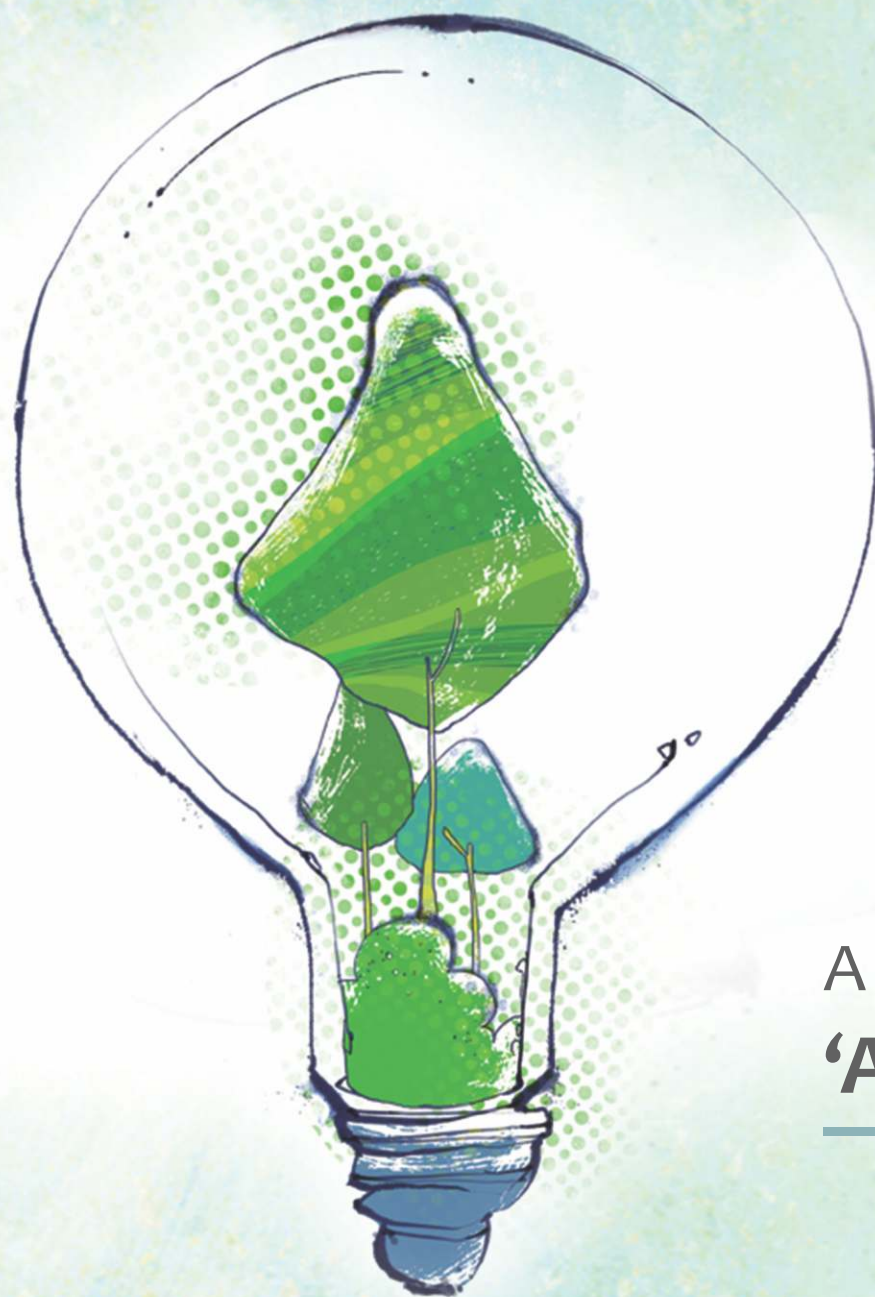




Business now  
goes green in  
warehousing





A **Green Idea** Called  
**'Arihant World'**

---





# STORAGE SPELLS ARIHANT

Welcome to the world of Arihant. Where modern construction and development go hand-in-hand with 'Green Initiatives'. Where creating world-class warehousing infrastructure, in the cleanest, greenest way is a way of life.

The Arihant group has over 25 years of experience in construction and property development and specialises in RCC warehousing. We are now at the threshold of presenting the only one of its kind, 22 million sq ft. Arihant World at Bhiwandi.



One of Asia's largest warehousing projects, Arihant World is unique in every way. From its flawless leasing model, hassle-free maintenance to its complete green infrastructure and strategic location, Arihant is here to change the way, India looks at warehousing. Offering our customers true value in all aspects of their warehousing business. Making business 'go green' effortlessly with our complete support and dedication at every step.



## VISION

To be known as a brand that people trust when it comes to conceptualising eco-friendly, world class construction. A brand that represents commitment, care and faith and above all is known for being transparent and honest with clients.

## MISSION

- Create a better standard of living and employment opportunities in the construction industry by building a state-of-the-art logistic park.
- Make a global presence in the warehousing industry.
- Continuously upgrade, improve, innovate and set new benchmarks that evolve with time and often ahead of time.





Welcome to our  
**Perfectly Poised**  
Green Site

---

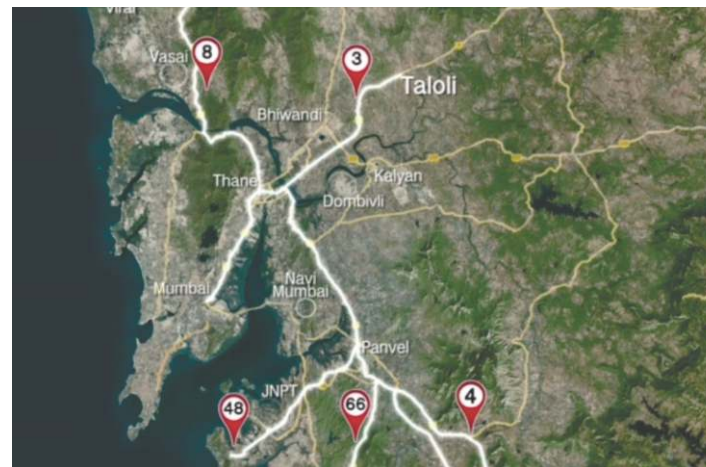




## THOUGHTFUL, STRATEGIC LOCATION

Arihant World is not just any warehousing project. It is well-thought of in every way, beginning from its immensely valuable strategic location at Bhiwandi in Taloli.

- Bhiwandi is known for its perfect geographic location and ease of transportation facilities. It boasts of a business friendly environment, octroi free zone and a fast developing infrastructure that make it very attractive for the industrialised world.
- The location advantage has made Arihant World benefit



from an extraordinary connectivity with airports, ports, railways and roads.

- It is a mere 10 kms from Kalyan, making it very convenient for both cargo movement as well as labour transportation.
- Arihant World is the only project that has two exclusive entry gates and two exit gates in its warehousing locale.



- Both the entries are strategically located. One entry opens out to the Delhi Alibaug Corridor and the other one connects the busy Mumbai-Nashik expressway, making JNPT accessible in merely 30 minutes.
- Our strategic location is a boon for multinational companies who can save time and money through this immensely useful connectivity.





**Warehousing** in a  
**League** of its own

---



# STUPENDOUS INFRASTRUCTURE

Arihant World offers you a never-seen-before infrastructure in the business of Warehousing. Offering one of the largest spaces in its vicinity, we at Arihant World have created an earth-friendly liveable warehousing space which is immaculately designed and perfectly synchronised with your needs.

## **Arihant World's salient features include:**

- Huge spaces with an area spread of over 22 million sq. feet out of which 4.35 million sq. feet is dedicated to roads and parking spaces.
- The central avenue of the complex is 80 feet wide, while the internal roads are 70 feet wide. Internally two trucks can conveniently dock opposite each other giving clearance to one truck to pass through.
- Green measures include solar electricity and provisions for storing rain water (rain water harvesting). This water would be put to its best use thus avoiding issues like water logging and termites.
- Thoughtfully planned fire safety measures like fire hydrants for each building.
- A large truck terminal with driver's lounge acting as a designated bay for more than 140 trailers and facilitating a smooth functioning of parking and turnaround time.
- 24\*7 electricity, emergency services and round-the-clock water supply.
- A dedicated maintenance department to meet any queries.











# ENHANCING THE WORK AMBIENCE AT ARIHANT

Arihant World offers a plethora of amenities to meet a high standard of living and make our client's work life as comfortable and convenient as possible.

- Our surveillance measures like CCTV cameras, fire & motion detection cameras along with remote surveillance and 6 months surveillance data backup system, ensure round the clock security for you.



- We offer spacious conference halls, training centres and commercial spaces within our project spaces.
- Clients can easily meet their banking and insurance needs too
- At Arihant World, post work recreation is an important factor as well. After a tiring day at work,



- you can put your feet up and unwind, spending your leisure time at our restaurants and cafes.
- The convenience centre at Arihant World is lavishly designed with easy access to hotels, health centers, courier services, internet facilities, etc.
- Our aim is to make our clients feel cared for, to enable them to relax and feel secure.





**A Perfect World**  
**Created** for you

---



# MULTINATIONALS REJOICE AT ARIHANT WORLD

Arihant World has been designed keeping in mind the corporate world, especially multinationals and their specific needs. Our futuristic warehouse complex is suitably divided into two industrial areas:

## PEB Structures

- PEB structures are specifically created for companies in the field of Cargo import and export, Automobiles, Retail & FMCGs.

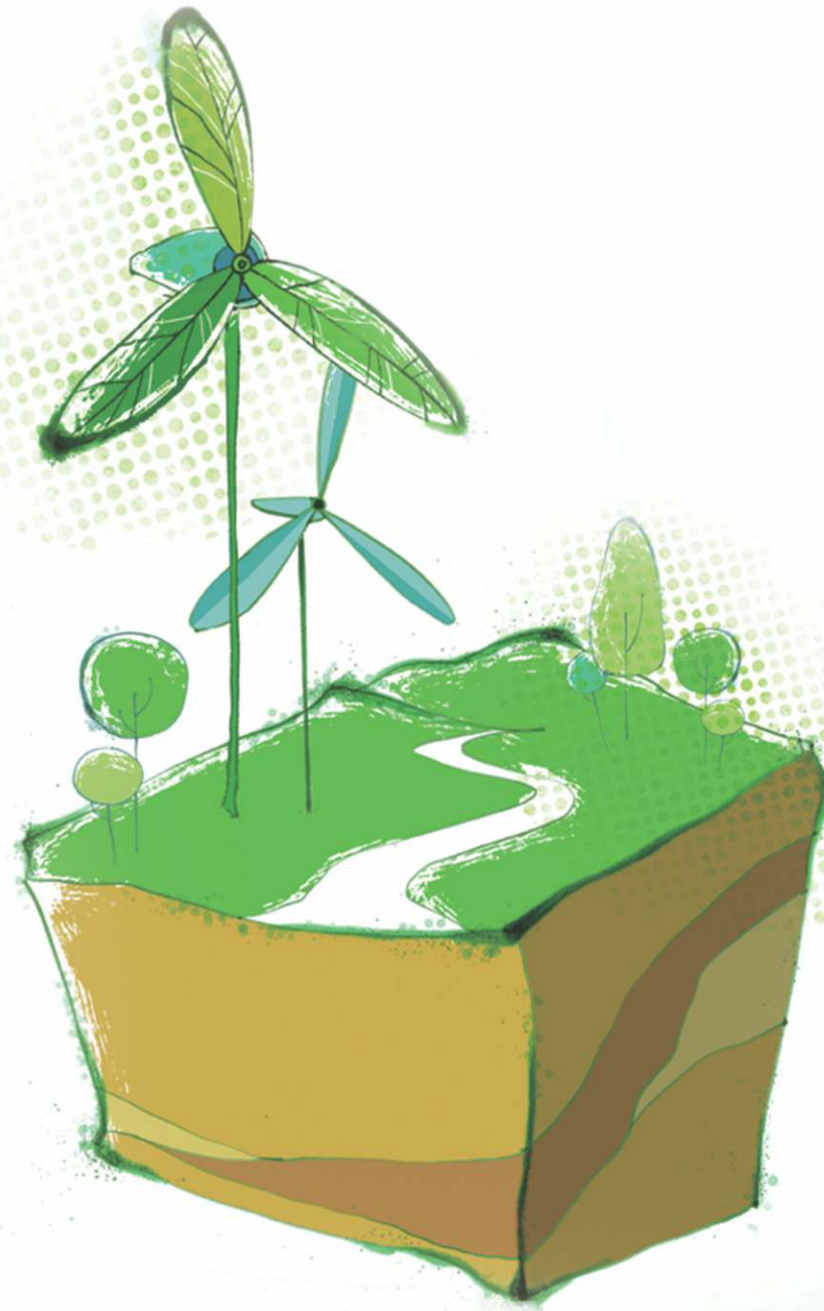


- These structures are designed using eco-friendly architecture and sustainable operations.
- They are 26 feet high on both ends & 32 feet high at the centre.
- These structures contain glass windows on both the sides along with translucent roof panels to ensure the flow of abundant natural light and use of minimum electricity.



- In tune with the green building concept, solar panels are installed on the roof top.
- The mechanized handling facility, trimex flooring and well planned storage spaces increase business efficiency.





**Strength** with a  
**touch of Flexibility**

---



# IMPECCABLE, FLAWLESS DESIGNS

## RCC Structures

- Arihant World's earthquake resistant RCC structures are intelligently designed and ideal for multinationals in the field of Food, Pharmacy and Cold storage.
- Our RCC structures are designed with distinctive features like spacious interiors, wide passage, well-lit & ventilated environment.



- The height of the RCC structures on the ground floor is 16 feet and on that of the two floors above is 14 feet respectively.
- The structures feature staircases with ramps and two elevators for carrying goods to enable hassle-free material handling.



- Flexibility is in-built in our multi-faceted design. We offer you the choice of combining multiple units in both PEB & RCC structures. This makes it convenient for our clients to customise their floor plates.





## Seamless Services Under One Roof

---



# BENEFITS OF WAREHOUSE LEASING WITH ARIHANT

- Arihant World is one of the first to offer the Lease model in warehousing in India, which enables our customers to concentrate on their business rather than the hassles that come with working in the countryside interiors.
- Arihant World's proven track record and expertise in the construction and warehousing business has enabled us to create a world class warehousing infrastructure under one roof.
- The Arihant Group has 3 decades of experience in warehousing having created 150 acres of warehousing spaces which are 100% occupied with a satisfied clientele.



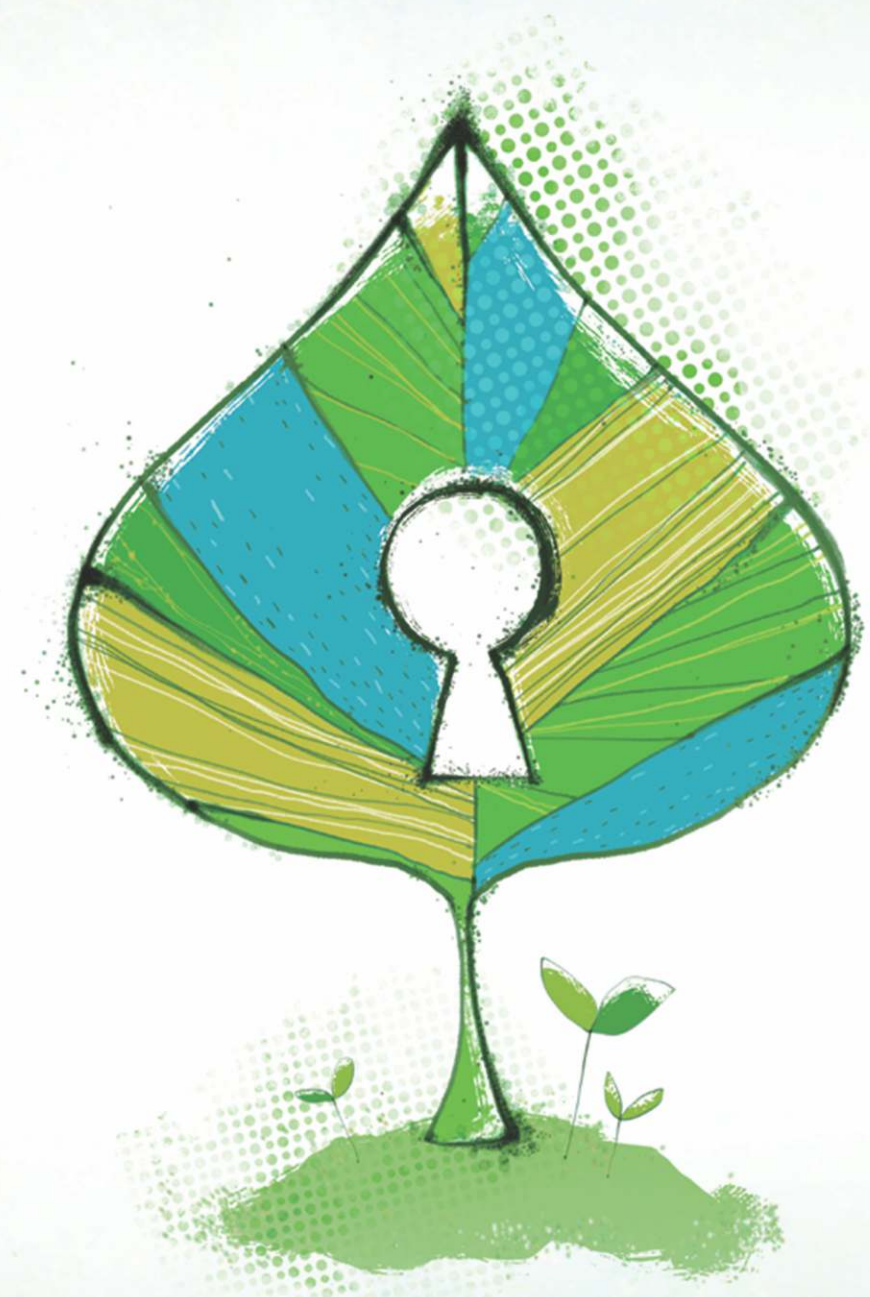
- Our strategic location in Bhiwandi makes it ideal for multinationals to access the important highways, as well as ports, airports and rail heads.
- Variables like the labor union, tempo union and Varai that significantly hamper the workflow of a company / manufacturer are kept under check at Arihant World
- No issues of maintenance. Our centrally located maintenance building with specially created single window customer care counters takes care of all maintenance related problems.
- Go Green business initiatives in the form of eco-friendly architecture, solar panels for electricity, rainwater



harvesting, plantation of trees throughout the outdoor spaces, glass elevations and translucent roof panels for natural light in PEB structures.

- Wide internal and external roads, modern infrastructure facilities like 24\*7 water, electricity, stringent security measures make Arihant World your first choice in warehousing.
- Arihant World aims at offering eco-friendly, world class integrated logistics solutions, partnering with customer needs to create competitive value chains together.





**Unlock**  
Your **Potential** With Us

---





# THE BACKBONE OF A STRONG, WELL QUALIFIED GROUP

## QUALITY CERTIFICATION

ISO 9001 & ISO 14001

## ARCHITECT

Professionally Designed by Prashant Sutaria - Architect Planner

# HIGHLIGHTS OF PAST PROJECTS



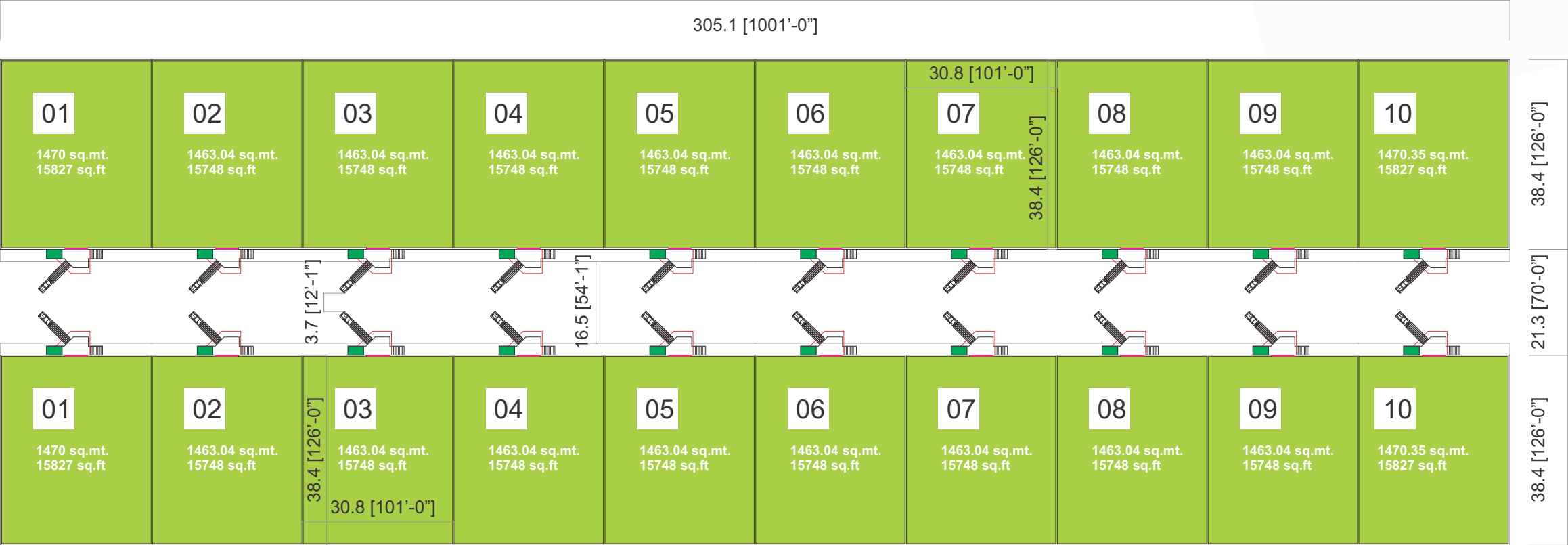








WC
  Pantry
  Ramp
  Lift (8' x 8')
  Rolling shutter (12' x 12')
  Ventilation (2' x 4')



# UBLOCK UNIT PLAN (PEB)



Ramp



Rolling shutter (12' x 12')



# Arihant WORLD

India's largest storage space



📍 Shree Arihant Compound, Retibandar Road, Kalher Village, Bhiwandi, Thane – 421302.

☎ 02522-276612/13/14 📠 02522-276615 ✉ info@thearihantworld.com

🌐 www.thearihantworld.com

A Project Developed by;

